

The Ghost Train Journal



Photo Credit: Turner Railroad Collection/Connecticut Historical Society

Museum Gets 45 Tonner



Dick Arnold instructs payloader operator in moving New Haven Terminal's 45 Ton no. 0413 onto an awaiting flatbed for its trip to Willimantic, CT. (Robert Hassett Photo)

Steam Coming to Columbia Junction



Engine no. 10, built by the Baldwin Locomotive Works of Philadelphia, PA. at their Standard Steel Works Division. This locomotive worked there from 1934 to 1948. More to come in next issue of GTJ. (Robert A. LaMay Photo)

MARK YOUR CALENDARS:

- 10/4, 10/5 & 10/11 - Willimantic Heritage Walking Tours
- 10/5/08 - Monthly business meeting - Windham Hospital - 7:00PM
- 10/11 & 10/12 - Willimantic Aftime & Neighborhood Willimantic Walking Tours
- 10/19/08 - Monthly membership meeting - Windham Hospital - 7:00PM
- 11/2/08 - Model Train & Decast Show - 10:00AM Windham High School (Details inside)
- 11/14/08 - Goods & Services Auction - Details inside

Connecticut Eastern Chapter, NRHS, Inc.
 Connecticut Eastern Railroad Museum
 PO Box 665
 Willimantic, CT 06226

Vol. 26 Number 7 – September 2008

The next scheduled meeting of the Connecticut Eastern Chapter, National Railway Historical Society will be held at Windham Memorial Hospital on

Sunday, Oct. 19, 2008 @ 7:00 PM

Please note business meeting will be Sunday Oct. 5, 2008 at the Windham Memorial Hospital at 7:00 PM.

Please note! If you have photos, short articles, or just want to make a comment – please forward them to:
Robert A. LaMay - Editor
[@cermf19@comcast.net](mailto:cermf19@comcast.net)

Walking Weekend Coming

Numerous events are planned for the upcoming Walking Weekend. Here are two samples –

Willimantic Railroad Heritage Walks

Enjoy a stroll near the Willimantic River and the old New Haven Rail Yard, while learning about the railroad history of Willimantic and the interdependence of rails, mills and the river. Equipment displays and anecdotes highlight this walk. Optional tour of museum (\$3.00). Gravel road is 1.25 miles and lasts 1.5 hours. Cameras allowed. Dates – Sat Oct. 4 – 2:00PM, Sun Oct 5 – 12:30PM, and Sat. Oct. 11 – 2:30PM Please meet at entrance to Conn. Eastern Museum main entrance.

Willimantic Airline & It's Neighborhood

Enjoy an anecdotal stroll down Union and Plain Streets before the redevelopment that took out a chunk of downtown and then walk the 'Airline' towards Willimantic's other river. We will walk along the Veteran's Railroad and talk about the 'Ghost Train', Willimantic industry, and town history. Paved surfaces approx 2 miles lasting 1.25. hours. Cameras allowed. Jillson Square parking Lot D.

Dates – Sat. – Oct 11 – 11:00AM and Sun. Oct. 12 – 1:00PM

September 2008

Chapter Leadership

President Mark Granville
mfgranville@charter.net
860-456-3956

Vice President Duke York
860-423-1878

Treasurer Jeff Laverty
jeffrr@cshore.com
860-429-7961

Asst-Treasurer VACANT

Secretary Bill Robinson
billrobinson@charter.net
860-456-4903

National Director Ray Axelrod
860-228-3197

Newsletter Editor –
Robert A. LaMay-
Cermf19@comcast.net
860-228-9671

Museum Website -
www.cteastrrmuseum.org.

Goods & Services Auction

Our museum along with the Windham Historical Society will be doing the Goods & Services Auction to be held on Friday, November 14, 2008. Doors will open at 6:30PM for previewing. It will once again be held at the Eldridge Auction House on 90 South Park St. in Willimantic, CT. The event is sponsored by Connecticut Eastern Railroad Museum, Windham Historical Society, and Windham Textile & History Museum. Please try to attend and support this very important fundraiser.

Fall 2008 Model Train & Die Cast Toy Show

Don't forget – another one of our important fundraisers takes place Sunday, **November 2, 2008, at the Windham High School located in Willimantic, CT on 355 High St. from 10:00AM to 3:00PM.** Free parking, wide aisles, and handicapped accessible. Admissions – Adults \$6.00, Children 8-12 - \$1.00 and children under 8 are

free. Please attend and support our railroad museum.

At the Fair

The museum attended a couple fairs and here are some of the photos.



This photo shows the building at the Brooklyn Fair that was used as a demonstrating Blacksmith Shop and museum display area. (Jean Lambert Photo)



This photo shows the museum display area at the recently held Brooklyn Fair. (Jean Lambert Photo)



Dick Arnold and Jean Lambert discuss museum items that were offered for sale at the recently held Hebron Harvest Fair. (Robert A. LaMay Photo)



NHT 0413 is on the Groton Freighthouse Siding with caboose. (Robert A. LaMay Photo – Lighting by Tom Nanos)

SULLIVAN STATION RESTAURANT

By Robert A. LaMay

I and a close friend of mine, Richard Sobielo was visiting in the Lenox, MA. area to photograph ABC's Good Morning America train. The train and crew were doing training moves between Lenox and Stockbridge, MA. in preparation of the live telecast which began on Monday 9/15/08. While there we had a chance to have dinner at the Sullivan Station Restaurant located in downtown Lee, MA.

The Lee Railroad Depot was originally built in 1893 by the New York, New Haven, & Hartford Railroad. Prior to its construction passengers boarded and disembarked from a tiny wooden building across the tracks. The inconvenience of crossing the tracks posed many issues which led the town in seeking a new and bigger structure.

Lee merchant and contractor Thomas Heaphy convinced Wellington Smith, a prominent resident and paper mill owner to represent the town in meetings with railroad officials in Boston, MA. When the new depot was approved the construction contract was awarded to Heaphy and the depot became a product of labor of the local citizens.

The new passenger depot opened on November 4, 1893, and the first ticket was purchased by Thomas Heaphy. The station remained the Lee Depot until 1971, at which time it became the possession of the Penn Central Railroad and was used as a line office.

September 2008

The real estate was purchased from Penn Central in 1975 by the present owner. The building was used to operate two businesses, Burritt Oil and Iron Horse Realty until 1980 when it was decided by the family to take on the painstaking job of restoring the building into a restaurant. The depot was transformed into a railroad station restaurant which opened on September 11, 1981. They just celebrated their 27th anniversary.

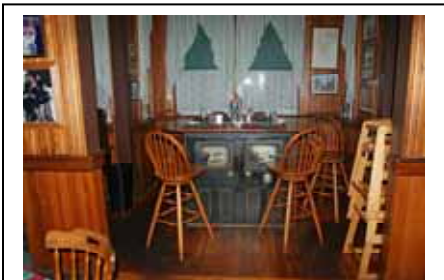
While there I had a chance to talk with the owner, Marilyn A. Kelly (Sullivan). She shared with me many of the interesting and excellent memories of the huge restoration project the family undertook. We had a very delicious and tasty meal from their varied menu that boasts a number of entries. I highly suggest whenever you are in Lee, MA. Please stop by and make this a great place to have a meal. Please visit and check out their website at www.sullivanstationrestaurant.com.

Sullivan Station Restaurant Railroad Street Lee, MA

Recent Photos



This view shows the restaurant at the corner of Elm St. and Railroad St. in downtown Lee, MA. (R.A. LaMay Photo)



This view shows the inside of the Sullivan Station Restaurant located in Lee, MA. This is the Ticket Office Room with a table built on top of the old office safe. (Robert A. LaMay Photo)

Around the Museum....



This photo taken 9/27/08 shows the latest progress on Pit no.3, looking toward turntable bridge – R.A. LaMay Photo



Latest progress on CV 4052 as worked by Duke York – (R.A. LaMay Photo)

45 Ton Diesel Arrives –

By Robert A. LaMay

Sometime early in 2008 Francis Saunders, an employee of the Providence & Worcester Railroad, got a call from David Rutkowski, Chief Mechanical Officer of the P&W. He was calling about a certain locomotive that had come available from the New Haven Terminal located in New Haven, CT. They needed to see if it met some of the railroads current needs. A trip was planned to visit and meet with Jack Webb to discuss the matter. After looking at the 45 Ton locomotive no. 0413, it was decided that the railroad couldn't acquire it. David then turned to Francis and asked if his museum friends in Willimantic would be interested in acquiring it. Shortly after, the phone lines were burning up with information regarding the possible acquisition. (A word of interest is worth noting here. Francis Saunders has been very instrumental in getting other items donated to the museum such as, Main Central Rail Bus, Hi-rail truck, Connecticut Central equipment trailer, various tools and other equipment.)

After discussing the idea at a monthly business meeting it was decided that Bob Hassett, Dick Arnold, and Paul Shamonis would plan a trip to check things out. They recommended that the museum get the locomotive and a motion was passed to spend up to \$2,000 to have the locomotive moved to Willimantic. May 14, 2008, Ken Sigfridson, Bob Hassett, and Dick Arnold travelled to New Haven and prepped the 0413 for its eventual move by Vito's Trucking. The footboards, mufflers, and couplers had to be removed, and the horns and lights had to be taken off in order to meet size limits for oversize loads. Ken Sigfridson donated the use of his boom truck and operator to load and transport the removed parts plus 2 spare traction motors and other parts.

On September 11, 2008, Bob Hassett, Ken Sigfridson, Dick Arnold, and Carolyn Standish (who would operate the video camera) headed off to New Haven to load the locomotive onto Vito's Trucking Co. S-type trailer. At Willimantic the 45 ton locomotive was unloaded onto the rails at Bridge St., couplers were re-installed, and Rolf Johnson with the 25 ton locomotive moved it to the museum by 5:00 PM. Lots of planning and work went into this project and the entire project came in at \$125 below budget.

September 2008



This view shows the 45 ton locomotive after it was loaded onto Vito's Trucking Co. trailer at New Haven, CT. Once it arrived at Willimantic it was offloaded onto the tracks. (Francis Saunders Photo)



Rolf Johnson takes the museum's newest acquisition to Columbia Junction. (Jean Lambert Photo)

Steam Coming to Columbia Junction

By Dick Arnold

After two years of working on a secret project I can now tell everyone we will have a steam engine in our collection. Mr. Joe Pagano and Mr. Max Miller have donated a Baldwin

0-4-0T oil fired steam locomotive to our museum. We plan to move the steam engine no. 10 into the roundhouse sometime this fall. We will share all of the details concerning this important donation in the very near future.



Head on of number 10 at Shelburne Falls, MA. (Robert A. LaMay Photo)