

The Ghost Train Journal



Photo Credit: Turner Railroad Collection/Connecticut Historical Society

Making Room for our New Addition



A few days before we received our newest addition, the equipment in the roundhouse needed to be rearranged. Shown here the New Haven Terminal GE 45 ton was taken out of the roundhouse and delivered to another location at the museum. (Robert A. LaMay Photo)

Rutland Caboose Arrives!!!



This photo shows the truck being directed backwards so the caboose can be off-loaded and put on its own trucks. A complete story in a special issue is planned. So stay tuned. (Robert A. LaMay Photo)

Connecticut Eastern Chapter, NRHS, Inc.
Connecticut Eastern Railroad Museum
PO Box 665
Willimantic, CT 06226

MARK YOUR CALENDARS:

- 12/07/2014 – Monthly Business Meeting – 7:00PM – Windham Hospital
- 12/21/2014 – Monthly Membership Meeting – 7:00PM – Windham Hospital
- 01/04/2015 - Monthly Business Meeting – 7:00PM – Windham Hospital
- 01/18/2015 - Annual Banquet – at Georgina's – Details inside
- 01/24-25/2015 – Amherst Railway Society Train Show
- 05/02/2015 – Museum opens to Public – Metalfest – details coming
- 06/21/2015 – Rail Faire & Tag Sale – details coming
- 09/05/2015 – 4th Annual Railroad Day – details coming

The Ghost Train Journal

Photo Credit: Turner Railroad Collection/Connecticut Historical Society

the ground water table has risen so we see mostly water. We are now trying to figure a way to clean out the cistern. So, watch for more updates on this project in future issues.

GREAT Trains – Holiday Exhibit Adrian Atkins

The Wilton Historical Society will be presenting their Great Trains Holiday Exhibit. The Society's historic 18th & 19th century buildings have been completely transformed into a breathtaking winter wonderland, complete with 9 tables and 16 different train layouts – all winding through forests of trees and lights. Also see 2 operating Ferris wheels. Come see this exhibit from Saturday November 28, 2014 – January 19, 2015. Hours Wed – Sat – 10:00AM – 4:00PM and Sun – 12:00N – 4:00PM. Admission – Kids under 12 and Members – FREE and Non-members \$10.00. For more information info@wiltonhistorical.org.

Memory!

Adrian Atkins

A couple years ago, a 10'6" wooden post appeared in the section-house. The post was placed outside on the Chaplin Station side. It lay outside in the rain for about a year. A year ago I brought the post into my shop to dry out thinking it was an old whistle post. The post measures 6" x 9" in cross section. Shows rot on the lower portion where it would have been buried in the ground. It also had black and white paint on it in the upper areas of the post. A closer look showed there was no 'W' carved into the post and couldn't find any sign of a black 'W' in the paint scheme.

Someone re3calls somebody bringing the post to the museum and possibly coming from the southwest corner near the New York border. Some member must know something about our mystery post. It is even a whistle post? If anyone thinks of anything about this post please call Adrian at 860-423-5930 and help solve this mystery.

Scrap Sales

Adrian Atkins

Along with cleaning up our backyard we have managed to receive some income. A group of 5 lawn mowers, in various states of disrepair, some non-railroad related donated items and a

Vol. 39 - Number 11– November

Chapter Leadership

President Mark Granville
mfgranville@charter.net
860-456-3956
Vice President Duke York
860-423-1878
Treasurer Jeff Laverty
jeffrr@cshore.com
860-429-7961
Asst-Treasurer Jean Lambert
860- 942-1071
Secretary Bill Robinson
wer384@charter.net
860-456-4903
National Director Ray Axelrod
860-228-3197
Newsletter Editor – Bob LaMay
860-530-1278
Cermfl9@comcast.net
Museum Website -
www.cteastrrmuseum.org.

Like Us on Face Book

Endowment Fund

Adrian Atkins

Our endowment fund started at zero. As of 09/30/2014 the balance has grown to \$33,597.63. This is the combination of contributions and the investment growth that has taken place. While we were very careful with the selection of the Vanguard Fund we must bear in mind that what goes up does indeed come down. However, we feel very confident that this fund should do well over time.

More Well to Do!

Adrian Atkins

In the previous issues of the Ghost Train Journal we have discussed the uncovering of the 10' deep concrete well riser. Now we have looked deeper. There is a cylindrical cistern below the concrete riser. We have not been down in the cistern yet but we have looked. We can't see it, but believe the floor is ledge and the cylinder walls are dry laid masonry. We estimate the cylinder to be 18-20feet in diameter having a concrete roof reinforced with railroad rails. The bottom 3 feet of the cylinder is dirt and water with 7 feet of air at the top.

At the driest time of the summer we could see only dirt and no water. At the present –

Monthly Membership Meetings
Held 3rd Sunday each month.
Sunday, February 15, 2015 @ 7:00
PM
Windham Hospital
Please note! If you have photos, short
articles, or just want to make a
comment – please forward them to:
Robert A. LaMay - Editor
@cermf19@comcast.net

Annual Banquet – 1/18/2015

Adrian Atkins

Sunday, January 18, 2015 @ 1:00PM

For our next annual banquet we will be returning to Georgina's located just west of Bolton Notch at 275 Boston Tpke (Route 6 & 44). Cocktail hour starts at 1:00PM.

Our feast will be a buffet style with main offerings of Beef with Mushroom Sauce, Chicken Marcela, and Stuffed Sole. The cost will be \$30.00 per person including light Hors D'oeuvres served during the cocktail hour from 1:00PM – 2:00PM, plus rolls and salad, dessert and coffee/tea. Reservations should be made by sending your check, payable to CERM. We need to receive all checks by January 12, 2015. **Please mail checks to; Connecticut Eastern Railroad Museum, PO Box 665, Willimantic, CT. 06226-0665.** If there are any questions please contact Jeff Laverty at 860-429-7961.

Directions –

From the east – Routes 6 & 44 will merge with I-384. Take the first exit to Routes 6 & 44. Go about 1 mile – Georgina's will be on your left.

From the west – Take I-84 east to I-384. Get off at Exit 5 – (Route 85). Turn left and go to bottom of hill. At traffic light turn right onto Routes 6 & 44. At the top of the hill look for Georgina's on the right.

Please try and join us for an excellent meal and there will be one of President Mark Granville's excellent and informative slide show following our main speaker.

Fall -2014



Photo Credit: Turner Railroad Collection/Connecticut Historical Society

clutter of scrap netted us \$626.10. Thanks to Mary Lou DeVivo for a good scrap price by Willimantic Waster Paper.

Annual Banquet Speaker

Jean Lambert

Our speaker grew up in Springfield, MA. He remembers the New Haven and New York Central Railroads and has many memories of the Indian Motorcycle Company and the fond days of swimming at Five Mile Mill Pond. He is an avid model railroader and is a 42 year member of the Amherst Railway Society. He also volunteers for the Belt Line modular group and is a helper and car shop superintendent.

His interest in the Hampden Railroad began in the 1970's when he discovered those famous abutments in Palmer, MA. With lots of help from the late Bob Buck, many hours would be spent walking the abandoned rights-of-way. Many more hours would be spent doing research in the Springfield Library archives. This hiking along with his field and book research has taken over 30 years but, a new railroad history book was born. The Hampden Roads story will be told in detail through the author's eyes and research at our Annual Banquet on Sunday January 18, 2015. Let's give Philip Johnson a warm welcome.

New Donation Delivered to Museum

Robert A. LaMay

A new donation in the form of a 1927 Rutland Caboose was recently delivered to the museum. Here I will show you a couple of the many photos taken from Plymouth, MA. To Willimantic, CT. The detailed story I am saving for a special issue of the GTJ. Dick Arnold was in charge of this project which took a couple years to complete. I will be providing most of the photos but Dick will be telling the story. So stay tuned.

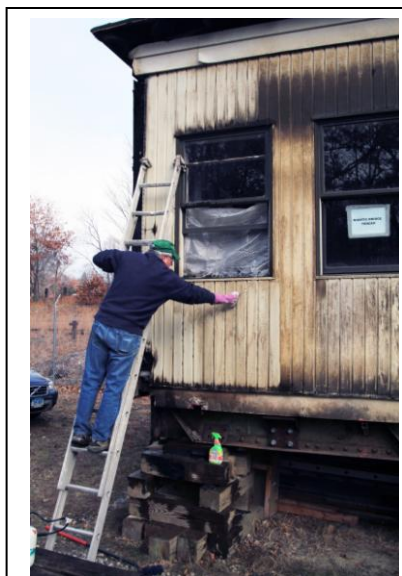
Now that the museum is closed for its 2014 season here are some photos taken since we closed. As long as the snow doesn't prevent us from working on numerous projects we will continue to work on these projects. So while you are looking for photos please check our Face Book page and 'Like Us' while there.

Bob LaMay - Editor

Fall -2014



Dick Arnold affixes the 'Watch Your Step' plate on the steps of our Rutland Caboose. (Robert A. LaMay Photo)



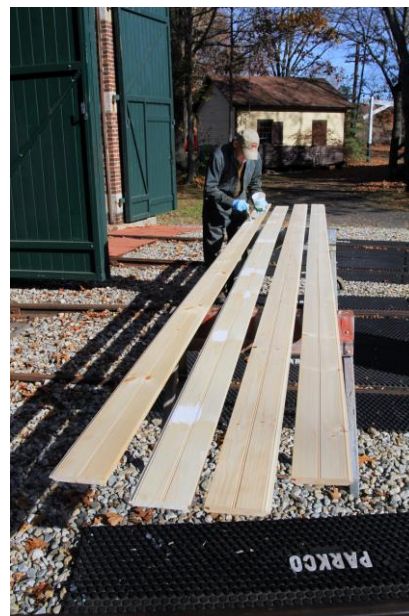
Cliff Lund removes years of dirt and grime from the 'Nan' Drawbridge shanty. Due to the bridge construction this side of the shanty never saw daylight. (RA LaMay Photo)



Janet Atkins (L) along with Patty Jurovaty is putting our parking area gardens to bed for the winter. (Robert A. LaMay Photo)



Art Hall Jr. wheels in one of the four sets of steps for the Rutland Caboose. (Robert A. LaMay Photo)



Looks like Bob Hassett is painting some pretty long boards for the roundhouse doors. (RA LaMay Photo)

The Ghost Train Journal

Photo Credit: Turner Railroad Collection/Connecticut Historical Society



Here is Rolf Johnson doing his bi-plane impersonation in front of the roundhouse just prior to take-off. He was waiting for just the right tail wind. (R. A. LaMay Photo)



Bob Hassett pours lubricant in the journal box so when the caboose is put on the trucks it will move ever so smoothly on the rails to Columbia Jct. (Robert A. LaMay Photo)



Dick Arnold along with others observes the prep work taking place prior to the caboose being offloaded from the trailer to the railroad trucks. (R. A. LaMay Photo)



The museum's truck crew moves one set of wheel trucks towards the caboose. (R. A. LaMay Photo)



When moving the CV box car from one track to another in the roundhouse there was a major discussion on how to move a leaning box car through the doorway safely. (Robert A. LaMay Photo)

The following photos will show our newly acquired 1927 Rutland RR Caboose Number 40.



Dick Arnold is giving instructions as to where the caboose can be safely offloaded onto its trucks for the move to Columbia Jct. (Robert A. LaMay Photo)



This photo shows Dick Arnold being interviewed by WFSB Channel 3 out of Hartford for the evening news. (Robert A. LaMay Photo)

Fall -2014