

# The Ghost Train Journal



Photo Credit: Turner Railroad Collection/Connecticut Historical Society

## Promoting Museum at ECSU



Adrian & Janet Atkins spent an afternoon on campus promoting our museum to the students and faculty of Eastern Connecticut State University. (Bob LaMay Photo)

## Fall 2013 Train Show



Jaemani Jones of New London, CT. watches two trains pass on the Connecticut S Guagers model train layout at the Connecticut Eastern Fall 2013 Model Train & Die Cast Toy Show held at Windham High School on 11/03/2013. (Robert A. LaMay Photo)

Connecticut Eastern Chapter, NRHS, Inc.  
Connecticut Eastern Railroad Museum  
PO Box 665  
Willimantic, CT 06226

### MARK YOUR CALENDARS:

- 11/17/2013 – Monthly Membership Meeting – 7:00PM Windham Memorial Hospital – **Vote on 2014 Officer's Slate**
- 12/01/2013 – Monthly Business Meeting – 7:00PM Windham Memorial Hospital
- 12/15/2013 – Monthly Membership Meeting – 7:00PM – Windham Memorial Hospital



Photo Credit: Turner Railroad Collection/Connecticut Historical Society

Vol. 38 Number 11– November 2013

Monthly Membership meeting of the Connecticut Eastern Chapter, National Railway Historical Society is scheduled  
**Sunday, November 17, 2013 @ 7:00 PM**  
**Windham Memorial Hospital – Please join us at this meeting. Please note! If you have photos, short articles, or just want to make a comment – please forward them to: Robert A. LaMay - Editor @cermf19@comcast.net**

## Chapter Elections!!!

The nominating committee consisting of Jean Lambert and Bob LaMay presented the following slate for next year’s officers at the October 2013 monthly meeting.

- President – Mark Granville**
- Vice-President – Duke York**
- Secretary – William Robinson**
- Treasurer – Jeff Laverty**
- Assistant treasurer – Jean Lambert**
- Nat’l Representative – Ray Axelrod**
- Endowment Trustee – Howard Raphaelson**

Election of officers will take place at the November 17, 2013 general meeting. **It is very important that members attend this meeting so that the necessary quorum is present.** Additional nominations will be accepted from the floor.

Fall -2013

### Chapter Leadership

President Mark Granville  
mfgranville@charter.net  
860-456-3956

Vice President Duke York  
860-423-1878

Treasurer Jeff Laverty  
jeffrr@cshore.com  
860-429-7961

Asst-Treasurer Jean Lambert  
860- 455-0268

Secretary Bill Robinson  
wer384@att.net  
860-456-4903

National Director Ray Axelrod  
860-228-3197

Newsletter Editor – Bob LaMay  
860-530-1278  
Cermf19@comcast.net

**Museum Website -**  
[www.cteastrrmuseum.org](http://www.cteastrrmuseum.org).

## Around the Museum



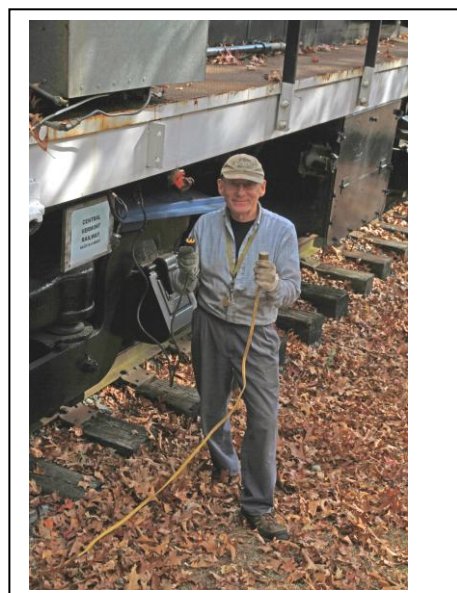
Walt Dumas scrapes off old paint and replaces the necessary wood before a new coat of paint can be added to the Chaplin Station. (Robert A. LaMay Photo)

## For You ‘Alco-Haulics)

By Cliff Lund

For the past few months Cliff Lund has taken over rewiring the Alco S4 locomotive with the help of Bob Hassett and Rolf Johnson. The pre-lubrication pump was started to pump oil throughout the engine. Also the oil lines were traced to see where the oil entered and exited the engine. Bob Hassett went up on the engine roof and opened the access panels. I then opened up the compression valves on top of the engine. The access panel was removed on the engine block and a bar was inserted at the end of the crankshaft. The engine was turned three complete revolutions. So success!

.....



Bob Hassett holds the important plug which will power the oil pump in the Alco S4 thus pumping oil through the engine. (Robert A. LaMay Photo)



# The Ghost Train Journal



Photo Credit: Turner Railroad Collection/Connecticut Historical Society



Left to right – Bob Hassett, Cliff Lund, and Rolf Johnson discuss the flow of oil through the engine of our Alco S4 locomotive. (Robert A. LaMay Photo)



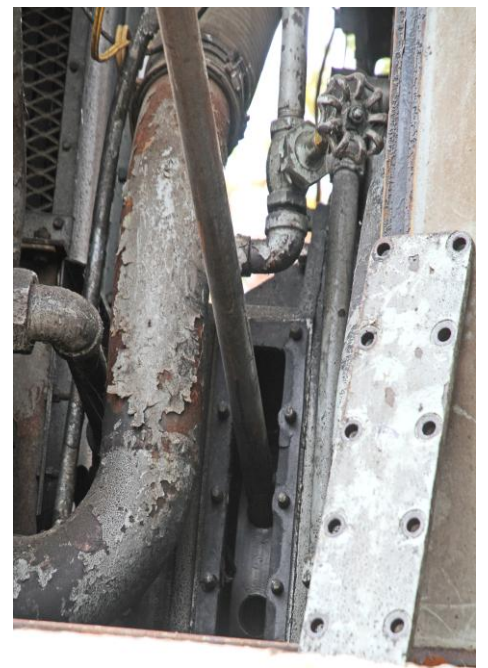
After opening the access panels above the engine Bob Hassett takes a closer look at the compression valves on the engine. (Robert A. LaMay Photo)



The continued discussions about oil flow brought the group to the nose of the Alco S4. (Robert A. LaMay Photo)



Here Bob Hassett and Cliff Lund push down on the bar which helps turn the engine's crankshaft. (Bob LaMay Photo)



Here is a closer look of the bar sticking into the crankshaft on the engine block. (Robert A. LaMay Photo)



# The Ghost Train Journal



Photo Credit: Turner Railroad Collection/Connecticut Historical Society



With an excellent view of the museum, Carolyn Stanich fills in the numerous holes found during an inspection of the GTW box car parked next to the freight house. (Robert A. LaMay Photo)



Dick Arnold has a reason to smile – the badly beaten box containing four undamaged Gallows Signal Lanterns was retrieved recently after being missing for two years. They were recently found in the woods by Adrian Atkins & Rich Cizik. (LaMay Photo)



Photo to the left shows Apprentice Blacksmith - Rider Strano of Ivoryton, CT. This was taken at the Connecticut Blacksmith Guild annual gathering at the museum on the weekend after museum closes. (R.A. LaMay Pix)  
\*\*\*\*\*

## FUNraising at Friendly's

**Tuesday – Nov. 12, 2013  
All Day – Get Voucher  
Call Ray --860-617-3308**

**20% of all sales with  
Voucher go to museum!!**

**Take your voucher and  
Visit Friendly's at -  
1405 Main Street  
Willimantic, CT.**



Ben Burchman from Griswold, CT watches a big Norfolk Southern train pass by. Ben was there with his grand-father, Richard Matters of Franklin, CT. (R.A. LaMay Pix)