

The Ghost Train Journal



Photo Credit: Turner Railroad Collection/Connecticut Historical Society

Love those Trains!



Brayden Edwards (L) and his grandfather, Ken Beaulieu gets a close look at the electric train as it passes by. This scene was taken at our Model Train and Die cast Show on April 17, 2011. (Robert A. LaMay Photo)

Gallows Signal Getting Ready!



This is how the Gallows Signal looked on April 22, 2011. This signal will be dedicated and a demonstration given on May 21, 2011 at Noon. (Robert A. LaMay Photo)

MARK YOUR CALENDARS:

5/14/11 – Rescheduled Night Photo Shoot for Shooter's Gallery Photo Group

5/15/11 – Monthly membership meeting – Windham Memorial Hospital – 7:00PM

Note! A Vote to Amend the By-Laws WILL take place – please be present.

05/21/11 – Gallows Signal Dedication Ceremony – Starts at High-Noon – Please check website

06/05/2011 – Monthly membership and General meeting – Windham Memorial Hospital – 7:00PM

Connecticut Eastern Chapter, NRHS, Inc.
Connecticut Eastern Railroad Museum
PO Box 665
Williamantic, CT 06226

Vol. 34 Number 5- May 2011

A membership meeting of the Connecticut Eastern Chapter, National Railway Historical Society will be held at Windham Memorial Hospital on **Sunday, June 5, 2011 @ 7:00 PM**

Note!! This will be a combined Business and Membership meeting due to Father's Day falling on 06/19/2011.

Please note! If you have photos, short articles, or just want to make a comment – please forward them to: Robert A. LaMay - Editor @cermf19@comcast.net

Chapter Leadership

President Mark Granville
mfgranville@charter.net
860-456-3956

Vice President Duke York
860-423-1878

Treasurer Jeff Laverty
jeffrr@cshore.com
860-429-7961

Asst-Treasurer Vacant

Secretary Bill Robinson
wer384@att.net
860-456-4903

National Director Ray Axelrod
860-228-3197

Newsletter Editor – Bob LaMay
860-228-9671
Cermf19@comcast.net

Museum Website -

www.cteastrrmuseum.org



The museum's Lamp-Lighter Dick Arnold checks to be sure everything is in working order for the Gallows Dedication on May 21, 2011. (R.A. LaMay Photo)



Blake Tarricone gets a fantastic view at the model railroad layout while sitting on Diane, his Mother's shoulder. (R.A. LaMay Photo)



A display which included a model of the Gallows Signal along with some history and numerous photos was available for show patrons to look at. (Robert A. LaMay Photo)



Carolyn Stanich puts finishing touches on Gallows Signal platform in preparation of the Gallows Signal Dedication May 21, 2011. (R.A. LaMay Photo)



Here's an interior view of Willimantic Section-House showing the Hand Pump Car when not in use. (R.A. LaMay Photo)



This is view from Gallows Signal as NECR's train 608 passes the museum. (R.A. LaMay Photo)

Summer -2011

The Ghost Train Journal



Photo Credit: Turner Railroad Collection/Connecticut Historical Society

Opening Day Activities



Nancy Callaghan from Marlborough, CT is with the Connecticut Blacksmith Guild is showing visitors some of her blacksmith skills. (R.A. LaMay Photo)



Erik Benson, member of the Connecticut Blacksmith Guild demonstrates some of his hammering skills on hot piece of steel. (Robert A. LaMay Photo)



Dick Arnold performs some last minute clearance testing of lanterns on the sign-boards. This is part of the demonstration which will take place at the Gallows Signal Dedication on May 21, 2011. (Robert A. LaMay Photo)



Paul Shamonis III rides on the Hand Pump Car as a couple museum visitors roll through Columbia Jct. Village. (Robert A. LaMay Photo)



Museum member Rich Cizik demonstrates some of his blacksmith skills for the visitors. (R.A. LaMay Photo)



Barry Hulse a Ferrier from Pomfret Center, CT shows how horse shoes are forged on an anvil. (Robert A. LaMay Photo)

Summer -2011

The Ghost Train Journal



Photo Credit: Turner Railroad Collection/Connecticut Historical Society



The museum had a sales table on opening day. In the photo from left to right are Jean Lambert, Pieter Roos, and Joseph Sokol. (Robert A. LaMay Photo)



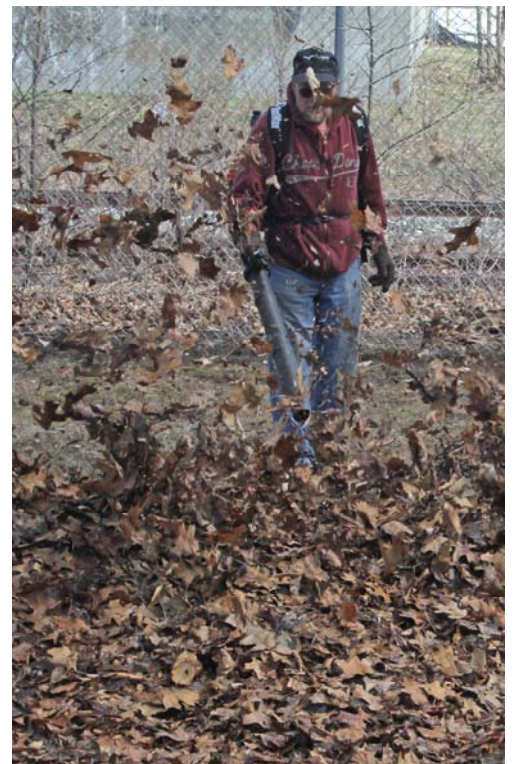
The musical group known as **The Electric Trains** performed some great music. Songs such as Airline and East Thompson, 1891 filled the air. (Robert A. LaMay Photo)



Duke York member of the Electric Trains does what he enjoys – singing railroad songs to a great audience on opening day. (Robert A. LaMay Photo)



This photo shows the latest progress in Pit number 2. (R. A. LaMay Photo)



Rolf Johnson performs some leaf clearing duties in preparation of Opening Day. (R.A. LaMay Photo)