

The Ghost Train Journal



Photo Credit: Turner Railroad Collection/Connecticut Historical Society

Connecticut Eastern Railroad Museum Presents

The Spring 2009
Model Train And Die Cast Toy Show

Windham High School
 355 High Street - Willimantic, CT
 March 29, 2009
 10:00 AM - 3:00 pm

G-40-0N38
 Operating Layouts

Dealer Tables

Model Exhibits

Railroadiana

**Free Parking - Wide Aisles
 Handicapped Accessible**

Admission:
 Adults - \$6
 Children (8-12) - \$1
 Children Under 8 FREE

**Please
 Don't Forget This Date!**

Track-work continues at Roundhouse



This 02/28/09 photo shows the progress on pit track number 4. See interior photo inside this issue for an updated view. (R.A. LaMay Photo)

MARK YOUR CALENDARS:

- 3/1/09 - Monthly Business meeting - Windham Memorial Hospital - 7PM
- 3/15/09 - Monthly Membership meeting - Windham Memorial Hospital - 7PM
- 3/29/09 - 2009 Spring Model Train & Die Cast Show (Details inside) - Please Note date - I had incorrect date in last GTJ.
- 4/5/09 - Monthly business meeting - Windham Memorial Hospital - 7:00PM
- 4/19/09 0 Monthly membership meeting - Windham Memorial Hospital - 7:00PM
- 5/2/09 - 2009 Museum Season Opens with Metal Fest

Connecticut Eastern Railroad Chapter, NRHS, Inc.
 Connecticut Eastern Railroad Museum
 PO Box 665
 Willimantic, CT 06226

Vol. 28 Number 2 – February 2009

The next scheduled meeting of the Connecticut Eastern Chapter, National Railway Historical Society will be held at Windham Memorial Hospital on

**Sunday, Mar. 15, 2009 @
7:00 PM**

Tom Nanos Slide Show!

Please note business meeting will held Sunday March 1, 2009 at the Windham Memorial Hospital at 7:00 PM.

Please note! If you have photos, short articles, or just want to make a comment – please forward them to:

Robert A. LaMay - Editor
[@cermf19@comcast.net](mailto:Cermf19@comcast.net)

Volunteer Time Sheets

By Joseph Sokol

A lot of members are working at the museum but are not submitting their volunteer time sheets. This is very important since it greatly helps us when we apply for various grants. So please take the time and complete the necessary paperwork and get them to Joseph Sokol, 1170 Hartford Tpke, Apt E-51, Vernon, CT. 06066 or leave them in the section house.

During the Off-Season

By Robert A. LaMay

When the gates close at the end of a season, there is still quite a bit that takes place at the museum, as long as the weather is favorable. Members gather every weekend to continue working on various projects both in-doors and outside. In the roundhouse – finish pit number 4, install rail both in and outside, and continue the restoration of CV caboose no. 4052.

Winter 2008

Chapter Leadership

President	Mark Granville mfggranville@charter.net 860-456-3956
Vice President	Duke York 860-423-1878
Treasurer	Jeff Laverty jeffr@cshore.com 860-429-7961
Asst-Treasurer	Gordon Key
Secretary	Bill Robinson wer384@att.net 860-456-4903
National Director	Ray Axelrod 860-228-3197
Newsletter Editor –	Robert A. LaMay Cermf19@comcast.net 860-228-9671
Museum Website -	www.cteastrrmuseum.org .

Outside work projects such as the construction of the blacksmith shop, lead tracks for 1, 2, and 4 tracks and the ash-pit track extension, are on-going. As time draws closer to opening season, grounds work needs to be taken care of for opening day. As you can see, there is lots to do, and if you can spare some time – come on down and give us a helping hand.



Dick Arnold and Jamie Key clear the rails in preparation of the arrival of the Yankee Silver Smith coach within the next few weeks. (R.A. LaMay Photo)



This 02/21/09 photo shows the latest progress to the Ash-Pit track which will pass next to the Blacksmith Shop, on the left. (Robert A. LaMay Photo)



This photo taken 02/21/09 shows the track configuration of pit tracks 3 to 6. (Robert A. LaMay Photo)



CV Alco S4 has its winter cover on and is in hibernation. (Robert A. LaMay Photo)

The Ghost Train Journal



Photo Credit: Turner Railroad Collection/Connecticut Historical Society



The first truck set from Wallingford, CT arrived at the museum and was unloaded. The body of the coach is in Wallingford awaiting the word it can be moved over the road to Willimantic, CT. (Robert Hassett Photo)



This shows the second wheel set after it was unloaded and the hook is about to be taken off. (Robert A. LaMay Photo)



This photo shows both sets of trucks at the museum. Now we wait for the car body to be delivered. (Robert A. LaMay Photo)



The second wheel set was delivered on 02/21/09 and is shown here being unloaded with the help of many museum members. (Robert A. LaMay Photo)

Winter 2008



Pit 4 Update – 02/21/09 - (LaMay Photo)

The Ghost Train Journal



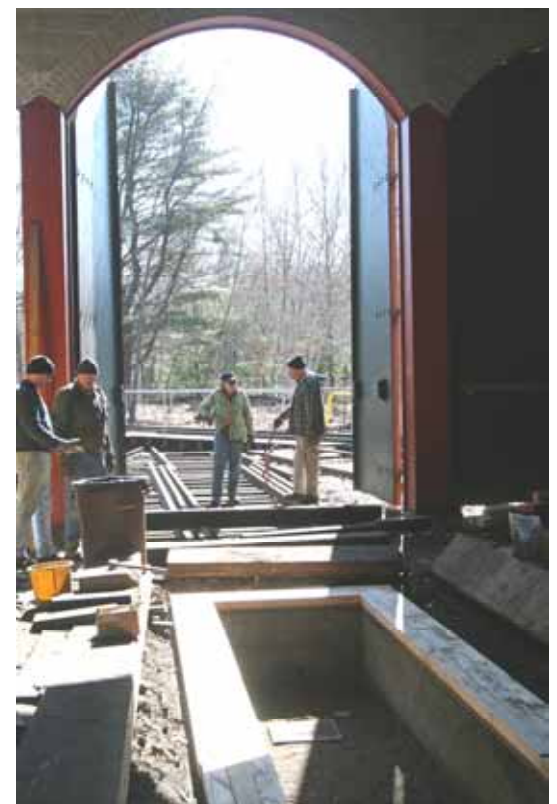
Photo Credit: Turner Railroad Collection/Connecticut Historical Society



Ready to Roll. This photo taken 2/25/09 of the Yankee Silversmith dining coach in the old parking lot at Wallingford, CT. The sign on the side says 'Moving Soon to Willimantic, CT. (Robert A. LaMay Photo)



Jamie Key takes photos inside the boiler of Steam No. 10 for a mapping project. (Robert A. LaMay Photo)



Pit 4 track and pit work progress in this 02/28/09 photo. (Robert A. LaMay Photo)



This 02/28/09 photo shows member Rolf Johnson moving ties into position in front of pits 1 and 2. (Robert A. LaMay Photo)