

Photo Credit: Turner Railroad Collection/Connecticut Historical Society

Photo Credit: Turner Railroad Collection/Connecticut Historical Society

Museum Calendar of Events

- Dec 6 Setup for Train Show
- Dec 7 CERM Train Show
- Dec 21 Membership Meeting
- Jan 4 Buisness Meeting
- Jan 18 Membership Meeting



CT Eastern
RR Museum
Willimantic,
Connecticut

Connecticut Eastern Railroad Museum Presents
The Fall
Model Train
And
Die Cast Toy Show



Windham Middle School
123 Quarry Sreet - Willimantic, CT
December 7, 2003
10:00 AM - 3:00 PM

Admission:
Adults - \$5
Senior Citizens (62+) - \$4
Children (8-12) - \$1
Children Under 8 FREE

Free Parking
Wide Aisles
Handicapped Accessible

FREE FOR KIDS 8 & OLDER!
Make & Take Boxcar Clinic
Make your own boxcar and take it home!

The Monthly Newsletter for the members of The Connecticut Eastern Chapter of the NRHS & the Connecticut Eastern Railroad Museum
Tom Nanos - Editor in Chief | Bob LaMay - Editor
Volume 11, Number 7 December 2003



Tom Nanos Photo

What's New at the Museum

Entertainment Books - A Great Fundraiser
We've begun a program that has the potential to raise some money for the museum - it's the sales of the Entertainment Book. What the book is is a book of coupons for everthing from car washes to dinners. The books are available in different regional editions that represent just about the entire country. They make great gifts for friends or family, or are great for yourself! Contact Bob Hassett at 860-742-1640 for details on what regions are available, and how you can get your copies!

Final word on the Fall Excursion
Treasurer Jeff Laverty reports that the excursion ended up netting just over \$2,800! Thanks to everyone who helped plan and organize the trip, those who supported the trip by purchasing tickets and riding along, and the members that helped out on board selling merchandise and drawing tickets.

Golden Spike Numbers
Jeff also had some preliminary numbers on the Golden Spike Ceremony. There were approximately 200 paid adults, and 150 paid children at the gate. Net proceeds will be in the \$1,100 range. An excellent turnout despite the rainy weather.

Roundhouse Windows
There is only one window left!! Also, one of the two round windows was sold. Get your order in soon!!!

New Members
A welcome is extended to the newest members of the Chapter. Welcome!!

Terry Jackson - Tolland, CT
Carl Mattson, Jr. - Cheshire, CT
Adam Bycholski - Ellington, CT

2003 at The Museum The Year In Pictures

Now that another year is winding down, we'd like to take this issue to recap the very busy, and successful year we've had at the Connecticut Eastern Railroad Museum! This issue will be dedicated to showing you what went on this past year. Some you've seen before, some will be new to you. So just kick back, and enjoy the images of the past year!

Thank you to everyone who helped make 2003 a great year. Let's make 2004 even better! Hope to see you all soon!

Tom Nanos & Bob LaMay
Editors, *The Ghost Train Journal*

Fall Foliage Excursion



The Providence & Worcester crew readies the train for the passengers of the CERM Fall Foliage Excursion
Tom Nanos Photo



Passengers board the train for the CERM Fall Foliage Excursion
Robert A. LaMay Photo



Passengers enjoy the observation car on the CERM Fall Foliage Excursion
Tom Nanos Photo



After a great trip, the train & crew readies for it's trip home.
Robert A. LaMay Photo

Installed Roundhouse Windows



Interior view of the installed windows.
Robert A. LaMay Photo



Windows installed in the North side of the roundhouse
Tom Nanos Photo

Connecticut Eastern Railroad Museum &
 Connecticut Eastern Chapter, NRHS, Inc.
 P.O. Box 665
 Willimantic, CT 06226

New At The Museum In 2003

Track, track, track! A push to get trackwork completed in advance of the Golden Spike Ceremony. Thanks to the many volunteers who helped make this happen!

R.A. LaMay Photos



Motorized tamper after purchase from the U.S. Navy.

R.A. LaMay Photo



The FL-9 & SPV on their way to the Museum. Taken in New London on P&W train NR-2.

Tom Nanos Photo



Scouts help out with some painting duties around the grounds.

R.A. LaMay Photo

The Alco S-4 Transformation

Cliff Lund's project has been to strip the S-4's K&L Feeds paint. In the process, he found the last CV noodle beneath! Here's some progress photos side by side showing just how far along Cliff has moved!



Photos by Tom Nanos

CERM Out And About



The Museum booth at the Amherst Railway Society Train Show..

R.A. LaMay Photo



Visitors at the Museum booth at the Hebron Harvest Fair.

R.A. LaMay Photo

Golden Spike Ceremony October 26, 2003



Operation Lifesaver table at the Ceremony promoting grade crossing safety and awareness.

R.A. LaMay Photo



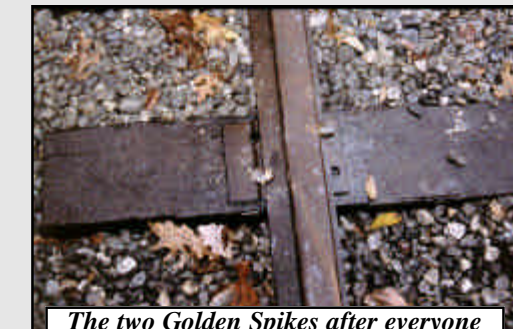
P&W Chief Mechanical Officer David Rutkowski takes a swing at the Golden Spike.

Tom Nanos Photo



Boxes of Commemorative Golden Spikes await the line of museum visitors forming at the beginning of the day.

Tom Nanos Photo



The two Golden Spikes after everyone had their hand at driving them in.

Tom Nanos Photo



CERM Photographer Bob LaMay surveys the ceremony on the #0800.

Tom Nanos Photo

The next scheduled meeting of the Connecticut Eastern Chapter, National Railway Historical Society will be at

Windham Community Memorial Hospital
112 Mansfield Ave., Willimantic, CT
on Sunday, Dec 21st @ 7:00 PM.

All members are welcome and encouraged to attend!

Please note: There will be no December Buisness Meeting due to the Train Show on the same date!

Museum & Chapter Contact Information

Chapter Leadership

President Mark Granville
mfggranville@charter.net
860-456-3956

Vice President Duke York
860-423-1878

Treasurer Jeff Laverty
jeffir@cshore.com
860-429-7961

Secretary Bill Robinson
billrobinson@charter.net
860-456-4903

National Director Joseph Cerreto
jcerreto@mindspring.com
860-456-0343

Ghost Train Journal

Editor in Chief Tom Nanos
webmaster@railfanzone.com
860-729-0955

Editor Bob LaMay
cermf19@aol.com
860-228-9671

Ghost Train Journal Publication Schedule

Committee & Department News Deadline:
Monthly Membership Meeting (3rd Sunday)

Member's Submissions:
Monthly Membership Meeting (3rd Sunday)

Mailing to Members:
First Thursday after the next Business Meeting