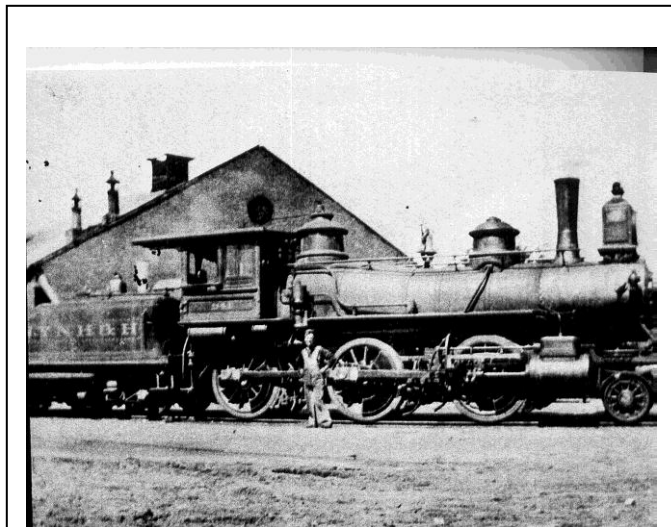




Photo Credit: Turner Railroad Collection/Connecticut Historical Society

Mystery Photo



Jack Swanberg gave me a copy of this photo. It looks like our roundhouse but the photo was un-dated and location was absent.

Museum's Newest Brakeman in Training



Rolf Johnson is in the section-house working on a new item to be used at the museum. It's called a motorized pre-lube. Basically what it does is pushes oil through the engine of a locomotive which makes the starting much smoother and less stressful on the engine parts. (R.A. LaMay Photo)

Connecticut Eastern Chapter, NRHS, Inc.
Connecticut Eastern Railroad Museum
PO Box 665
Willimantic, CT 06226

MARK YOUR CALENDARS:

- 1/1/2012 – **Have a Happy & Healthy New Year**
- 1/1/1969 – New Haven Railroad absorbed by Penn Central Railroad
- 1/15/2012 – Conn. Eastern Railroad Museum Annual Banquet – details inside
- 1/28-29, 2012 – Amherst Railway Soc. Show – West Springfield, MA.
- 2/5/2012 – Monthly Business Meeting – Windham Hospital – 7:00PM
- 2/19/2012 – Monthly Membership Meeting – Windham Hospital 7:00PM

Vol. 34 Number 12– December 2011

A combined Monthly business and membership meeting of the Connecticut Eastern Chapter, National Railway Historical Society will be held at Windham Memorial Hospital on **Sunday, February 19, 2012 @ 7:00 PM**

Please note! If you have photos, short articles, or just want to make a comment – please forward them to: Robert A. LaMay - Editor

Annual Banquet

The Connecticut Eastern Chapter – NRHS Annual Banquet will be held on Sunday January 15, 2012 at 2:00PM at Leventi's Restaurant located in the Columbia Shopping Center at the junctions of Route 6 and Route 66 in Columbia, CT.

Our menu choices and prices will be the same as last year. Ownership of the restaurant has changed but the head cook remains the same. Selections will be –
Baked Boston Scrod - \$26.
Baked Stuffed Chicken Breast - \$26.
English Cut Prime Rib - \$33.

Reservations should be made by sending your check payable to CERM. **We need to receive the checks by January 12, 2012.** Please mail your checks to:

Connecticut Eastern Railroad Museum
PO Box 665
Willimantic, CT. 06268

If your concern is the weather or your plans might change – please give Jeff Laverty a call at 860-429-7961. However if you call after the 9th your choices will be limited to either

Fall -2011

Chapter Leadership

President Mark Granville
mfgranville@charter.net
860-456-3956
Vice President Duke York
860-423-1878
Treasurer Jeff Laverty
jeffr@cshore.com
860-429-7961
Asst-Treasurer Vacant
Secretary Bill Robinson
wer384@att.net
860-456-4903
National Director Ray Axelrod
860-228-3197
Newsletter Editor – Bob LaMay
860-228-9671

Cermfl9@comcast.net

Museum Website -

www.cteastrrmuseum.org.

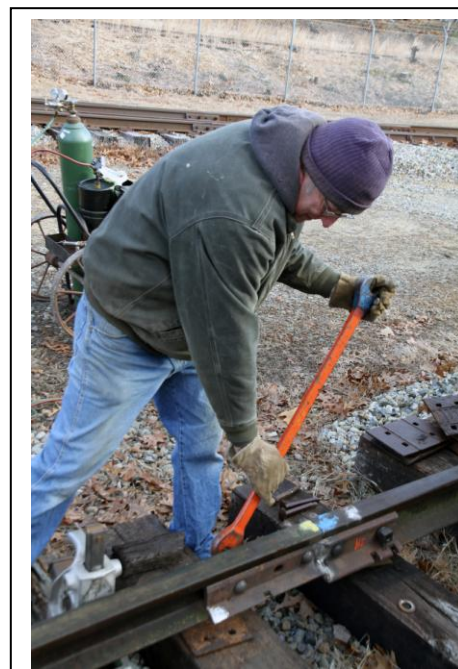
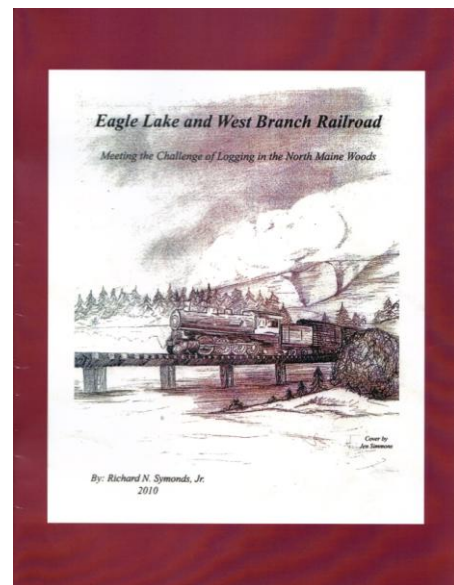
Baked Scrod or English Cut Prime Rib.

Following our guest speaker's presentation (see below), President Mark Granville will present his Annual Review of museum activities and events. As in the past this should be very entertaining. Please try to attend this event as it is a way to share fellowship, laughter, and time sharing conversations.

Guest Speaker

This year's guest speaker at our Annual Banquet will be the museum's newest author. His newest book entitled Eagle Lake & West Branch Railroad. The book was written by Richard N. Symonds and he will be presenting its history along with the myths and unresolved

mysteries surrounding its short existence. He will also be showing photos of its equipment and surrounding the operations of this logging railroad in the North Maine Woods. Please attend it should prove to be very interesting. Below is the cover of Richard's new book.



Art Hall, Jr. tightens bolts of custom-made joint bar (at the museum) along the new caboose track. (Bob LaMay)

The Ghost Train Journal



Photo Credit: Turner Railroad Collection/Connecticut Historical Society



Bob Hassett grinds material in preparation of making custom-made rail joint bars for use at the museum. (C. Stanich Photo)



This photo shows William Bouchelle working on the restoration of the Central Vermont #4052 caboose inside the roundhouse. This photo gives you a better idea as to how the restoration program is progressing. (Robert A. LaMay Photo)



William Bouchelle applies new pieces of wood to the Central Vermont Caboose number 4052. (Robert A. LaMay Photo)



This photo taken through one of the openings of the CV #4052 caboose shows Duke York scraping rust and debris from the metal frame in the floor where rotted wood was removed. (Robert A. LaMay Photo)

Fall -2011

The Ghost Train Journal



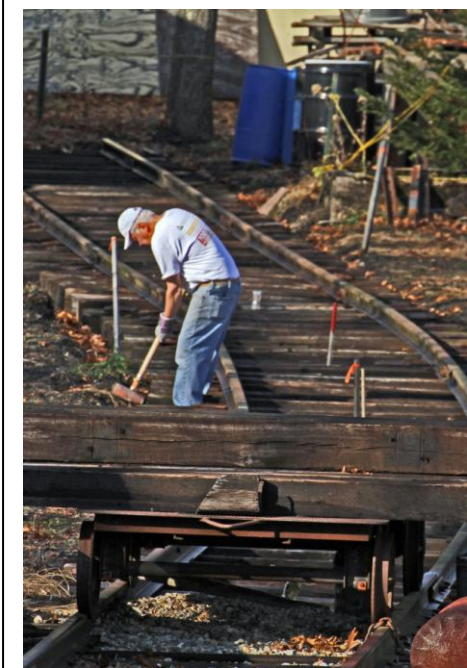
Photo Credit: Turner Railroad Collection/Connecticut Historical Society



Adrian Atkins sorts joint bars and tie plates from the Mansfield Depot Rte 44 crossing job. (Robert A. LaMay Photo)



I had a chance in mid-November to see the SD60 locomotives on lease to the P&W Railroad. When not being used in ethanol service they can be seen hauling general freight as shown here passing the museum heading north. (Bob LaMay Photo)



View from Gallows Walt Dumas works on Caboose siding. (Bob LaMay Photo)



Art Hall, Jr. measures the metal strap on Pit number 2 round-house doors. The museum is designing a lighter, stronger and more durable door. (Robert A. LaMay Photo)



Dick Arnold and Bob Hassett hold a discussion on the platform of the museum's car mover inside the round-house. (Robert A. LaMay Photo)

Fall -2011